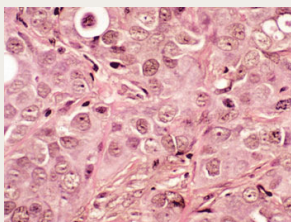


A Steady Source for Non-immortalized Primary Breast Cancer Cells

Reference Number TO 15-00027

The Challenge

Today, pre-clinical breast cancer research is based on immortalized cell lines. These lines generally have undergone multiple modifications which influence their biological properties, and it is most likely that they no longer reflect the characteristics of the primary tumor. It is becoming increasingly evident that the use of established cell lines compromises the outcome of screening protocols, and may lead to the wrongful dismissal of otherwise promising drug candidates. To increase objectivity in pre-clinical evaluation, it is utterly important to develop new *in-vitro* models for breast cancer research. A promising approach is the use of primary-culture cells, directly retrieved from tumor biopsies. However, state-of-the-art culture conditions limit the number of cell passages, preventing the use of a single cell origin in a continuous and standardized assay protocol.



Tissue section of breast cancer tumor (Source: Fred Hutchinson Center)

The Technology

The invention relates to a method for the enrichment and cultivation of primary breast cancer cells without prior immortalization. It provides a source for "real" tumor cells, which allow a more objective scenario for testing drug-sensitivity than using artificially altered cancer cell lines.

Commercial Opportunity

In-licensing opportunity for a method to expand primary tumor cells.

Patent Situation

A patent family based on WO02006105777A1 has been established.

Further reading

International patent publication number WO02006105777A1.

Berlin
Braunschweig
Hamburg
Hanover
Munich
Neuherberg

Ascenion GmbH
Karl-Wiechert-Allee 3
D-30625 Hanover
T +49 (0) 511 532 8921
F +49 (0) 511 532 8929
info@ascenion.de
www.ascenion.de

Contact
Dr. Ralf Cordes
Technology Scout
T + 49 (0) 511 532 8921
F + 49 (0) 511 532 8929
cordes@ascenion.de